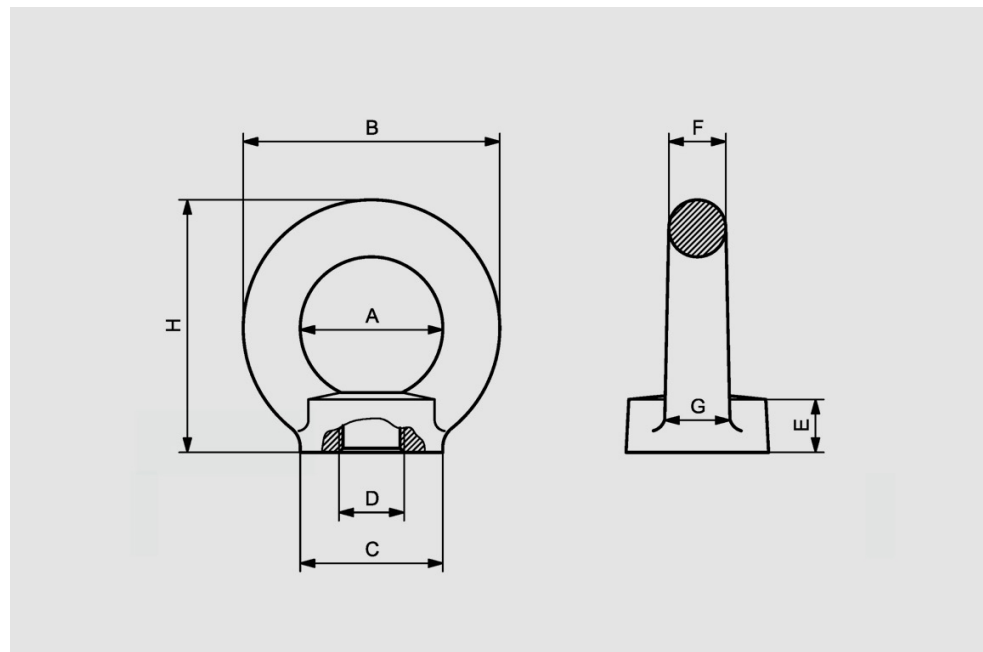










GOLFARE FEMMINA 8.8 / LIFTING EYE BOLTS 8.8

GOLFARE FEMMINA 8.8 LIFTING EYE BOLTS 8.8							
Misura Size	A	B	C	E	F	H	Peso Weight
	mm	mm	mm	mm	mm	mm	kg
M6	25	45	25	10	10	45	0,1
M8	25	45	25	10	10	45	0,1
M10	25	45	25	10	10	45	0,1
M12	35	63	35	14	14	62	0,26
M14	35	63	35	14	14	62	0,26
M16	35	63	35	14	14	62	0,26
M18	50	90	50	20	20	90	0,75
M20	50	90	50	20	20	90	0,75
M24	50	90	50	20	20	90	0,75
M27	60	108	65	24	24	109	1,4
M30	60	108	65	24	24	109	1,4



GOLFARE ORIENTABILE CON VITE 8.8 / EYEBOLT WITH SCREW 8.8

CABLES\_012021

LIMITI CARICO DI LAVORO WORKING LOAD LIMIT W.L.L (T)									
									
Misura Size	0°	0°	90°	90°	0°-45°	45°-60°	0°-45°	45°-60°	Coppia max di serraggio Max tightening couple
	1 braccio Single leg	2 bracci 2 legs	1 braccio Single leg	2 bracci 2 legs	2 bracci 2 legs		3/4 bracci 3/4 legs		(Nm)
M6x15	0,4	0,8	0,1	0,2	0,14	0,1	0,2	0,14	3,5
M8x15	0,8	1,6	0,2	0,4	0,28	0,2	0,4	0,28	8
M10x16	1	2	0,25	0,5	0,35	0,25	0,5	0,35	16
M12x22	1,6	3,2	0,4	0,8	0,56	0,4	0,8	0,56	28
M14x20	3	6	0,75	1,5	1	0,75	1,5	1	45
M16x29	4	8	1	2	1,4	1	2	1,4	70
M20x32	6	12	1,5	3	2,1	1,5	3	2,1	135
M24x40	8	16	2	4	2,8	2	4	2,8	230
M30x45	12	24	3	6	4,2	3	6	4,2	465